

The Advanced Learning Program™

For Dynamics SL

“Learn Beyond the Basics.”

How to Efficiently Close the Year with Dynamics SL



Your Dynamics SL ALP Faculty:

From Left: Kristin Foose, Brian Dietz, and Linda Smith

BRITTENFORD
SYSTEMS

www.brittenford.com

703-860-6945

From the Desk of
Brian Dietz, President of Brittenford Systems

Dear Dynamics SL Student,

Congratulations! You are about to learn new skills with Dynamics SL – and enhance your professional value.

To maximize your experience, we encourage you to:

- Attend the webinar class with your team – to spark ideas.
- Use this handout to follow along and take notes.
- Ask questions during class!
- Watch the replay to reinforce and deepen your learning.

After class, discuss with your team:

- Your top three “ah ha!” moments.
- Three new skills you will practice within one week.

Many students tell us that after class, they think of more questions, or run into “snags” implementing their new skills. *“If only they could have one-on-one access with the instructor – just for an hour - to ask a few questions and get personalized coaching.”*

Good news! Your instructor for this class is reserving five 60-minute coaching sessions on Tuesday, December 15th. This offer is exclusively for students in today’s class, and is first-come, first-served.

With “One-on-One Coaching,” you’ll get:

- A personal 60-minute phone coaching session
- Remote access to your computer by the instructor (optional)
- Expert attention to your specific needs and issues
- High-value, focused learning

The sessions are coaching, not consulting, so you’ll be “taught to fish instead of given a fish.”

Best of all, the cost is a low \$95 for the hour – about half our standard hourly rates. As a result, space is limited to the first FIVE requests. To reserve your session, email me directly at bdietz@brittenford.com or call 703-860-6945 x208.

Enjoy today’s class!



Brian Dietz
President, Brittenford Systems

NEW!

*“One-on-One Coaching”
with today’s instructor*

*Dig deeper into today’s
topic based on your
individual needs*

*Only five 60-minute
sessions available
on Tue., December 15th*

Reserve Now

“The Business Problem”

(based on your questions)

“What steps do I need to take in order to close out the year?”

The Impact:

- Time consuming preparing for Year End
- Unreliable information for auditors
- Unable to process transactions for new year
- Loss of data
- Unable to produce financial reports
- Transactions posted in the wrong period

The Solution:

- **Educating yourself on Year End Procedures!**

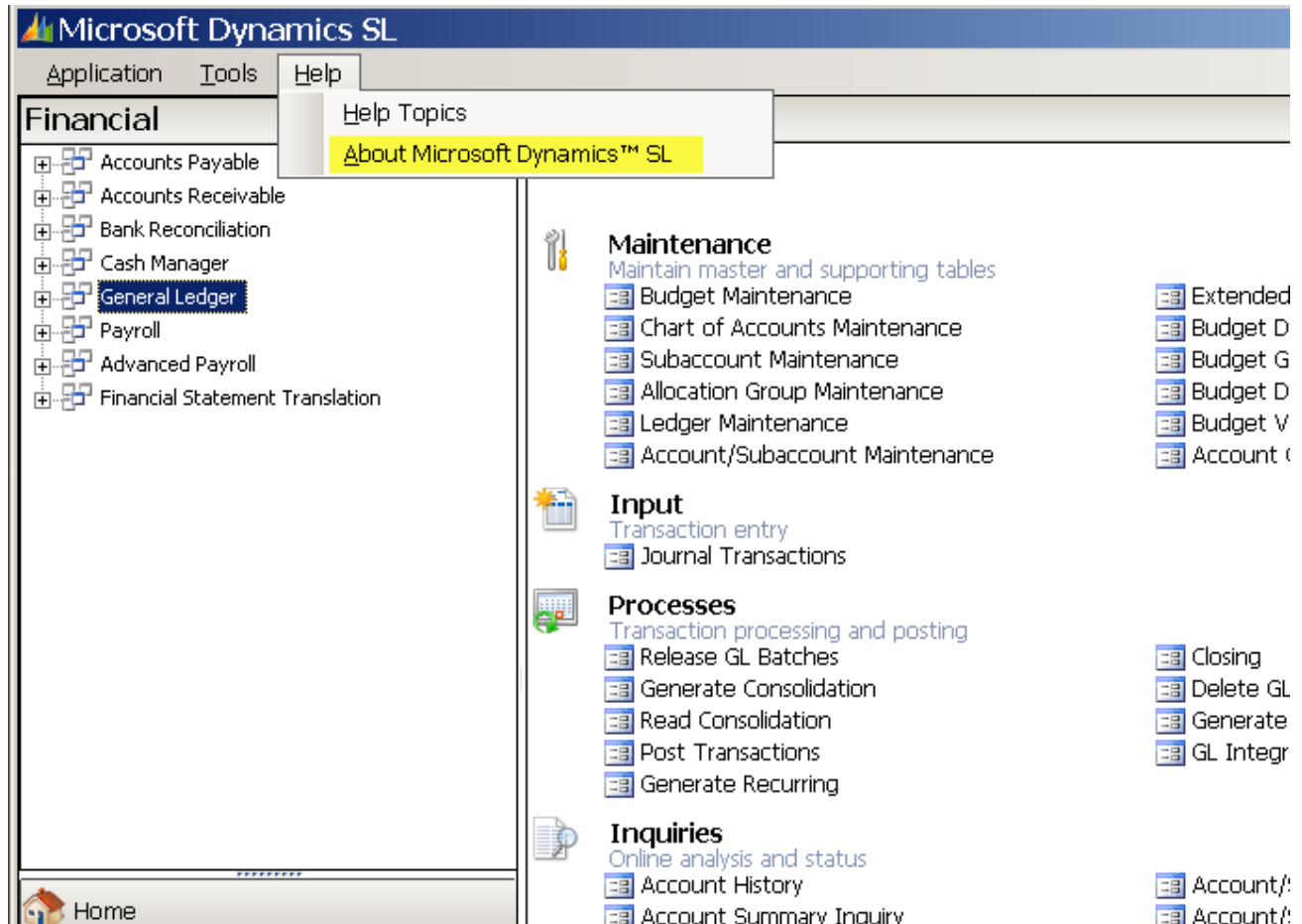
The Benefit:

- Reliable, complete, accurate, and valid data for auditors
- Ability to open new year and process transactions
- Produce financials for new year
- Prevent accidental deletion of data
- Up to date tax information (W2's, 1099's, Payroll)

What are YOUR questions – or favorite tips – about Dynamics SL?

- Before the call, share them at www.SLQuestion.com
- During the call, submit them using the “Q&A” menu item.

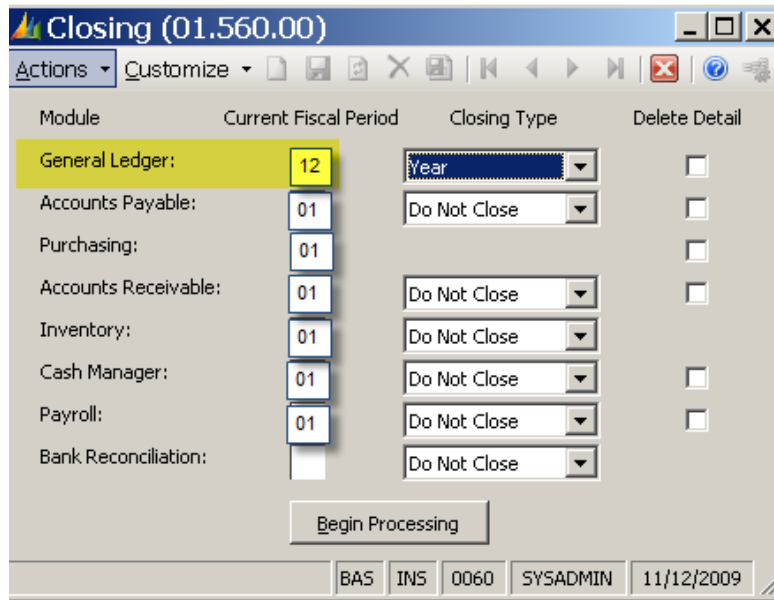
What are Year End Updates?



To find out what version of Dynamics SL you are on, in SL select from the _____ menu and then select _____.

Supported Versions of Dynamics SL include:

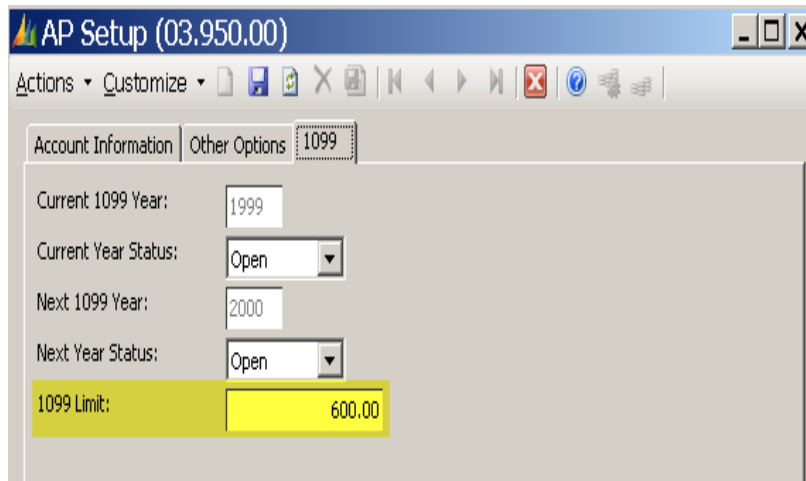
- 7.0, 7.0 SP1, 7.0 SP2, 7.0 FP1
- 6.5 SP2, 6.5 SP3



The last module to be closed in Dynamics SL is _____.

The _____ module will automatically close when you close the Accounts Payable module.

The _____ module will automatically close when you close the Accounts Receivable module.



The 1099 Limit is set in the _____ window and is currently set to \$600.00.

Join a hands-on training class!

| Brittenford Systems Dynamics SL Training Calendar Winter 2010 For easy enrollment: www.Brittenford.com/Training or 703.860.6945 x209 (CPE Credits are Available) 5% Early Bird Discount | | | | |
|--|-------------|-----------------|-------------------------|--------------------------|
| Reporting: | Date | Location | Standard Tuition | Rewards Tuition** |
| Power Excel - Budgeting Secrets , 1 day | Jan 7 | Reston, VA | \$345 | \$259 |
| Crystal Reports Basics , 1 day | Jan 12 | Chevy Chase, MD | \$695 | \$521 |
| Crystal Reports Advanced , 2 days | Jan 19 | Reston, VA | \$1,145 | \$859 |
| FRx Financial Reporting Basics , 2 days | Jan 26 | Reston, VA | \$1,145 | \$859 |
| FRx Financial Reporting Advanced , 2 days | Jan 28 | Reston, VA | \$1,145 | \$859 |
| Dynamics SL: | | | | |
| Boot Camp (GL, AP, AR), 2 days | Dec 15 | Reston, VA | \$1,390 | \$1,043 |
| General Ledger , 1 day | Jan 19 | Chevy Chase, MD | \$595 | \$446 |
| Accounts Payable , 1 day | Jan 20 | Chevy Chase, MD | \$595 | \$446 |
| Accounts Receivable , 1 day | Jan 21 | Chevy Chase, MD | \$595 | \$446 |
| Inventory , 1 day | Jan 22 | Chevy Chase, MD | \$595 | \$446 |
| General Ledger , 1 day | Feb 16 | Reston, VA | \$595 | \$446 |
| Accounts Payable , 1 day | Feb 17 | Reston, VA | \$595 | \$446 |
| Accounts Receivable , 1 day | Feb 18 | Reston, VA | \$595 | \$446 |
| Cash Manager , 1/2 day | Feb 19 | Reston, VA | \$395 | \$296 |

Visit our website at www.brittenford.com/training or call Debi at 703-860-6945 x209.

Questions about today's class? Need help? Contact:

Shereen Mahoney: smahoney@brittenford.com or 703-860-6945 x204

Brian Dietz: bdietz@brittenford.com or 703-860-6945 x208