

*The Advanced Learning Program™  
for Dynamics SL  
“Learn Beyond the Basics.”*

**“How to Tune-up Dynamcis SL to Improve  
Performance and Reliability”**



*Kristin Foose, Brian Dietz, and Linda Smith  
Co-Instructors*

*The Advanced Learning Program™  
For Dynamics SL*

**BRITTENFORD**  
SYSTEMS

[www.brittenford.com](http://www.brittenford.com)

703-860-6945

## Brittenford Referral Rewards™

Refer Brittenford Systems to a friend who could benefit from :

- ❖ Microsoft Dynamics SL (“Solomon”)
- ❖ Microsoft Dynamics GP (“Great Plains”)
- ❖ Microsoft Dynamics CRM
- ❖ Microsoft SharePoint
- ❖ Microsoft Forecaster

**You could earn a cash reward  
up to \$500!\***

**Earn Cash Rewards**



[referrals@brittenford.com](mailto:referrals@brittenford.com) or  
Michael at 703-860-6945 x203 or [mmahoney@brittenford.com](mailto:mmahoney@brittenford.com)

\* Restrictions apply, contact Brittenford for details

## “The Business Problem”

(based on your questions)

“Users sometime complain that the system is performing slowly. In addition, I’m concerned about the reliability of the data backup. What would you recommend?”

### The Impact:

- Potential data loss – data inaccessible
- Performance issues – slow response time, lags in the system
- Operating on an unsupported Dynamics SL version
- Computer resources are not configured to optimize SQL Server and Dynamics SL
- Gaps in backup data
- System security breaches
- Inadequate storage space on server

### The Solution:

- Learn how to administer and performance tune your Dynamics SL environment!

### The Benefit:

- Have complete and up to date backups
- Make sure your computer is equipped and configured correctly for running Dynamics SL
- Increased and optimized response time and performance
- Operate on a supported Dynamics SL version
- Eliminate gaps in backup data
- Have a managed security system
- Increased storage space on server

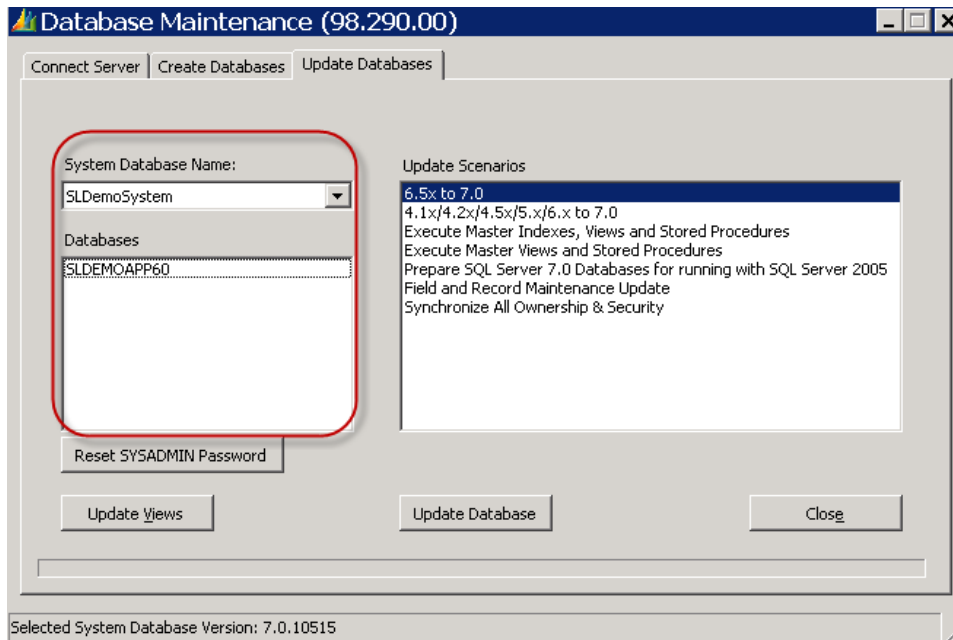
**What are YOUR questions** – or favorite tips – about Dynamics SL?

- Before the call, share them at [www.SLQuestion.com](http://www.SLQuestion.com)
- During the call, submit them using the “Q&A” menu item.

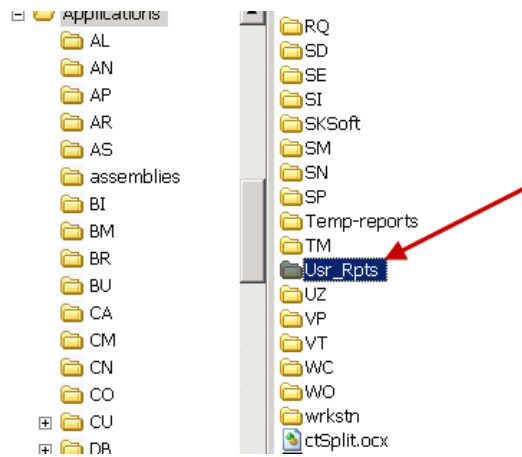
**The 2 most important items to Back Up:**

- \_\_\_\_\_ Folder
- \_\_\_\_\_ (Application and System)

Databases contain an organization's actual working data: accounting information, key documents, etc.



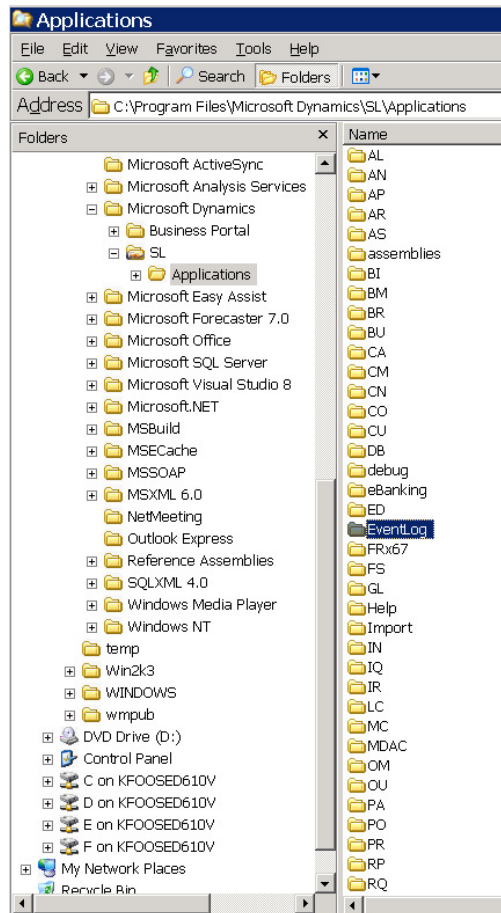
The Usr\_rpts directory contain \_\_\_\_\_ or modified reports.



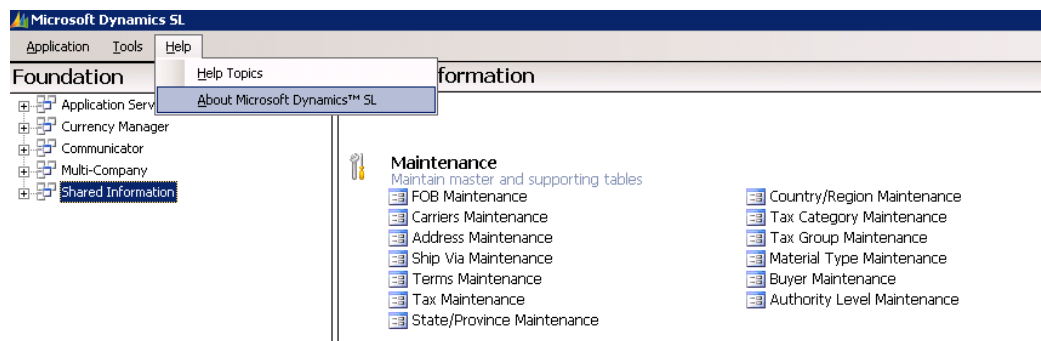
\_\_\_\_\_ directories, such as AR, AP, GL, PO,OM, etc. are the directories where each module's files, screens, and standard reports are stored.

Eventlog is the directory where Dynamics SL Event Logs are stored. This describes:

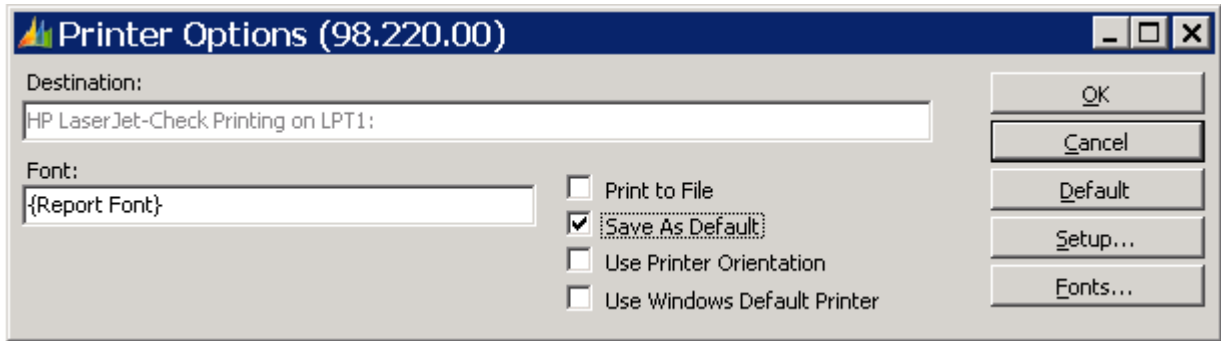
- Errors
- Successful and Unsuccessful processes
- Trace database activity



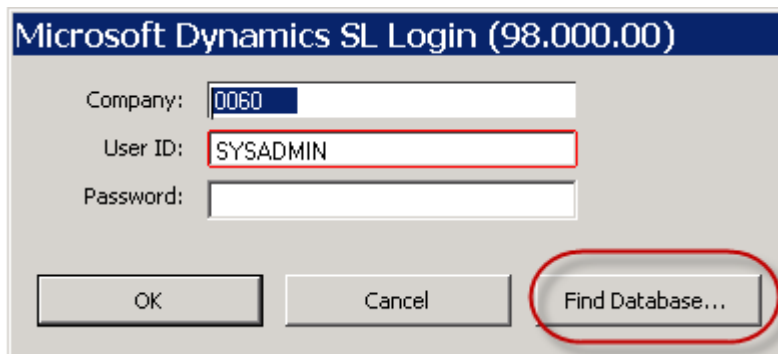
In order to determine which Dynamics SL version you are currently on, select from the \_\_\_\_\_ menu, About Microsoft Dynamics SL.



In order to setup a Printer, select from the \_\_\_\_\_ menu, Printer Setup...



To access another database (Test), while logging into Dynamics SL select the \_\_\_\_\_ button and select the Database from the drop down.



Questions about today's class? Need help? Contact:

Kristin Foose: [kfoose@brittenford.com](mailto:kfoose@brittenford.com) or 703-860-6945 x251

Brian Dietz: [bdietz@brittenford.com](mailto:bdietz@brittenford.com) or 703-860-6945 x208

**Join a hands-on training class!**

Visit our website at [www.brittenford.com/training](http://www.brittenford.com/training) or call Debi at 703-860-6945 x209.

<b>Brittenford Systems</b>				
<b>Dynamics SL (Solomon) Training Calendar</b>				
<b>Spring 2010</b>				
For easy enrollment: <a href="http://www.Brittenford.com/Training">www.Brittenford.com/Training</a> or 703.860.6945 x 209				
(CPE Credits are Available)				
<b>5% Early Bird Discount</b>				
<b><u>Dynamics SL and Reporting:</u></b>	<b><u>Date</u></b>	<b><u>Location</u></b>	<b><u>Standard Tuition</u></b>	<b><u>Rewards Tuition**</u></b>
<a href="#">Crystal Reports, Basic</a>	April 20	Reston, VA	\$695	\$521
<a href="#">Dynamics SL Boot Camp, 2 days</a>	April 20	Chevy Chase, MD	\$1,390	\$1321
<a href="#">FRx Boot Camp, 3 days</a>	April 27	Chevy Chase, MD	\$1,795	\$1,346
<a href="#">Forecaster – Essentials I, 2 days</a>	April 27	Reston, VA	\$1,145	\$859
<a href="#">Forecaster – Essentials II, 2 days</a>	April 29	Reston, VA	\$1,145	\$859
<a href="#">Power Excel – for Accountants</a>	May 6	Reston, VA	\$345	\$259
<a href="#">Power Excel – Budgeting Secrets</a>	May 13	Reston, VA	\$345	\$259
<a href="#">FRx Financial Reporting, Basic</a>	May 18	Reston, VA	\$1,145	\$859
<a href="#">FRx Financial Reporting, Advanced</a>	May 20	Reston, VA	\$1,145	\$859
<a href="#">Accounts Payable</a>	May 26	Chevy Chase, MD	\$595	\$446
<a href="#">Accounts Receivable</a>	May 27	Chevy Chase, MD	\$595	\$446